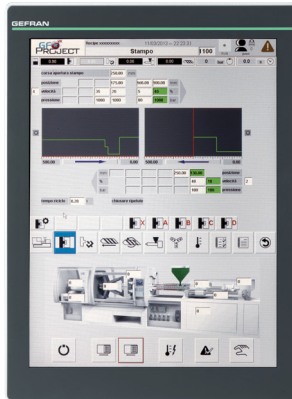


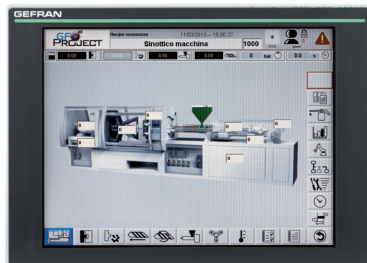
GF_VEDO EV-V104CT



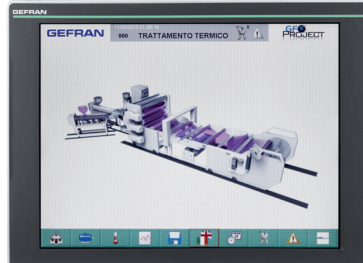
GF_VEDO EV-V150CT



GF_VEDO EV-104CT



GF_VEDO EV-150CT



Main features

- Powerful embedded PLC
- Scalable
- Wide availability of communication ports
- Real-time solution
- Unique programming software
- Certification CE, UL

Main applications

- Plastics
 - Packing
 - Wood
 - Metalworking



PROFILE

The GF_VEDO line of operator terminals is a compact and affordable machine control solution.

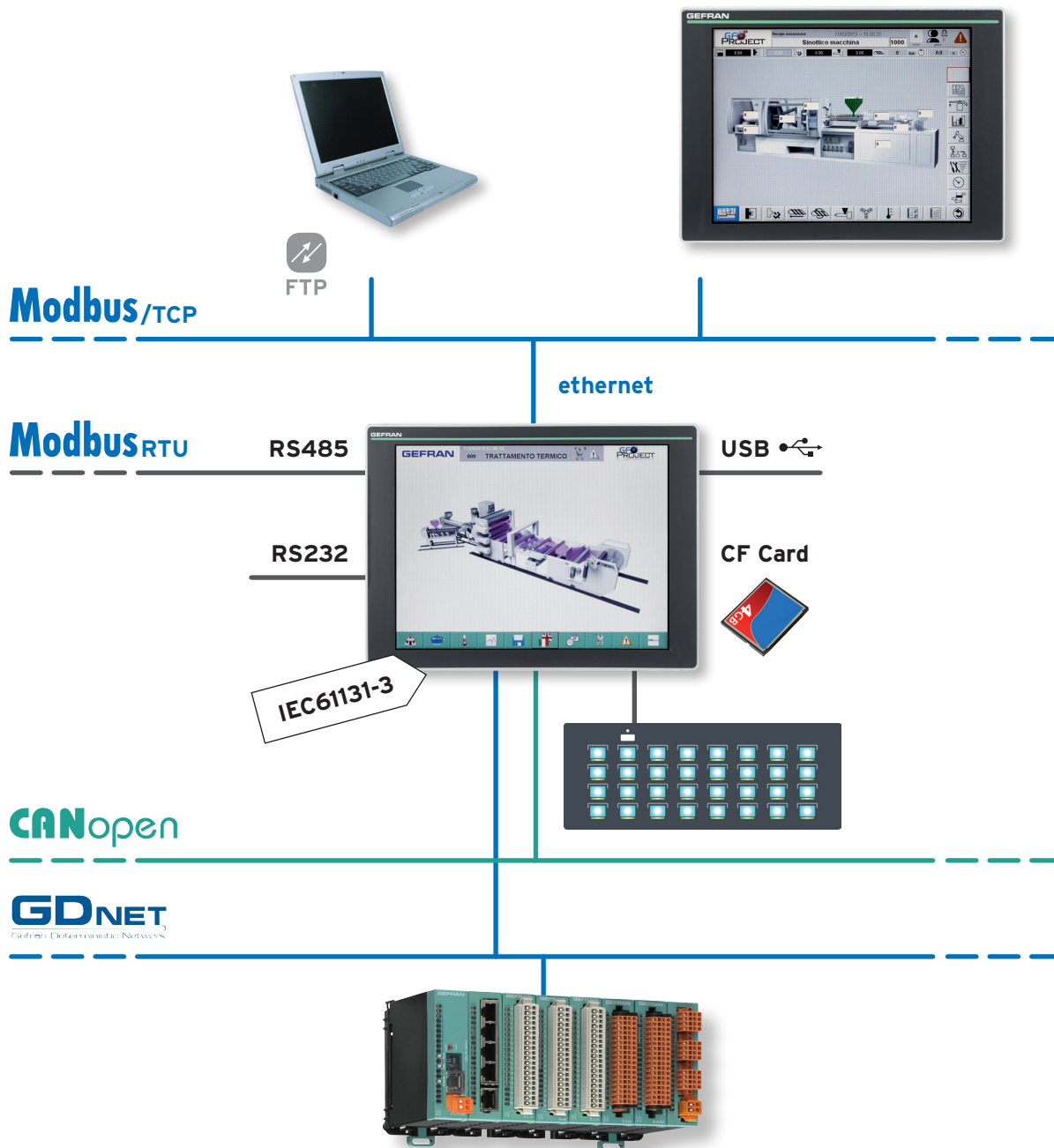
A single product integrates a PLC and graphic pages display [SCADA], making the creation of automation solutions extremely rapid and economical.

Panel sizes range from 10.4" to 15" with touch screen and horizontal or vertical installation.





The panel uses a GEODE 32 bit processor with RAM from a minimum of 256MB to a maximum of 1GB, based on the operating system installed.

Extremely important characteristics are the complete absence of moving parts and a fan-free cooling system.

All of the products are programmable with GF_Project VX programming environment.



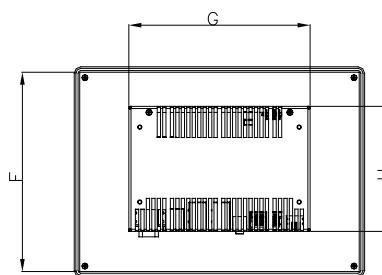
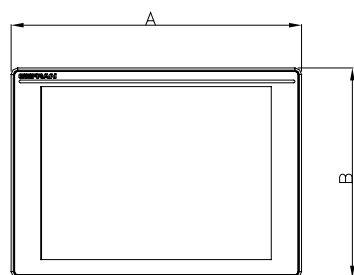
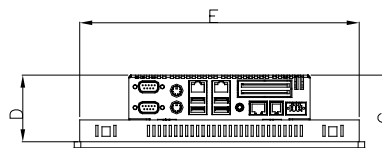
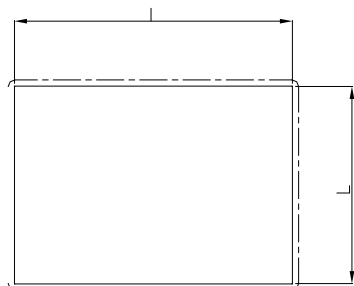
TECHNICAL DATA

GF_VEDO EV	104CT		V104CT	150CT		V150CT
						
Function	Display control [PLC+HMI]					
Touch	resistive					
Resolution	SVGA 800x600		SVGA 600x800	XVGA 1024x768		XVGA 768x1024
Backlighting	LED/30.000			LED/50.000		
Processor	ADM Geode LX900					
Memory	256MB / 512MB / 1GB					
Flash memory	1GB					
I/O Pheripherals	<div>2 x Ethernet 10/100 Mbps (RJ45 with LED)</div> <div>1 x CANopen from 9.6 to 115kBaud (D-Sub 9 PM) Terminals insertable from outside</div> <div>1 x RS232 not optoisolated from 9.6 to 115kBaud (D-Sub 9 PM) 1 x RS485 optoisolated from 9.6 to 115kBaud (RJ10)</div> <div>4 x USB 2.0 Host (500 mA) (connector: 4-pin type A)</div> <div>Connector: 6-pin miniDIN (green: Mouse - violet: Keyboard)</div> <div>1x machine keyboard</div>					
ethernet						
CAN						
Serials						
USB						
PS2						
TF serial						
Models						
horizontal						
vertical			YES			YES
Protection	IP65 (IEC 529)					
Temperature	<div>0...+50°C</div> <div>-20°C...+70°C</div>					
operating storage						
Humidity	5...95% HR non condensing					
Power supply	24 VDC ±25% 1mA max					
Certification	CE , UL					

DIMENSIONS

See size table for the different models

Horizontal model



Vertical model

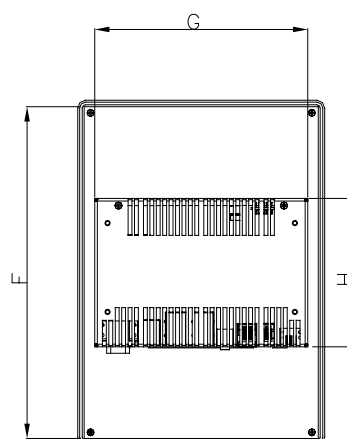
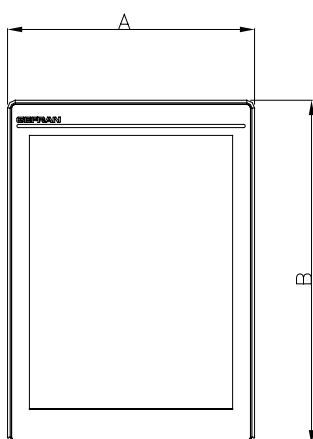
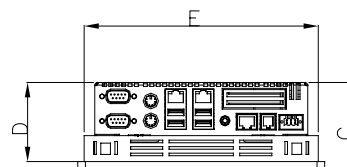
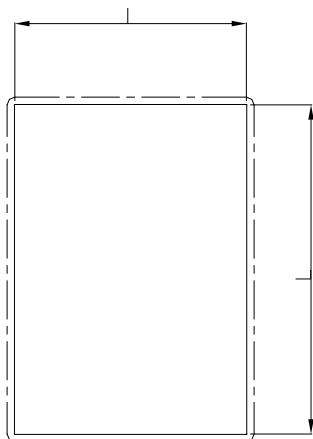
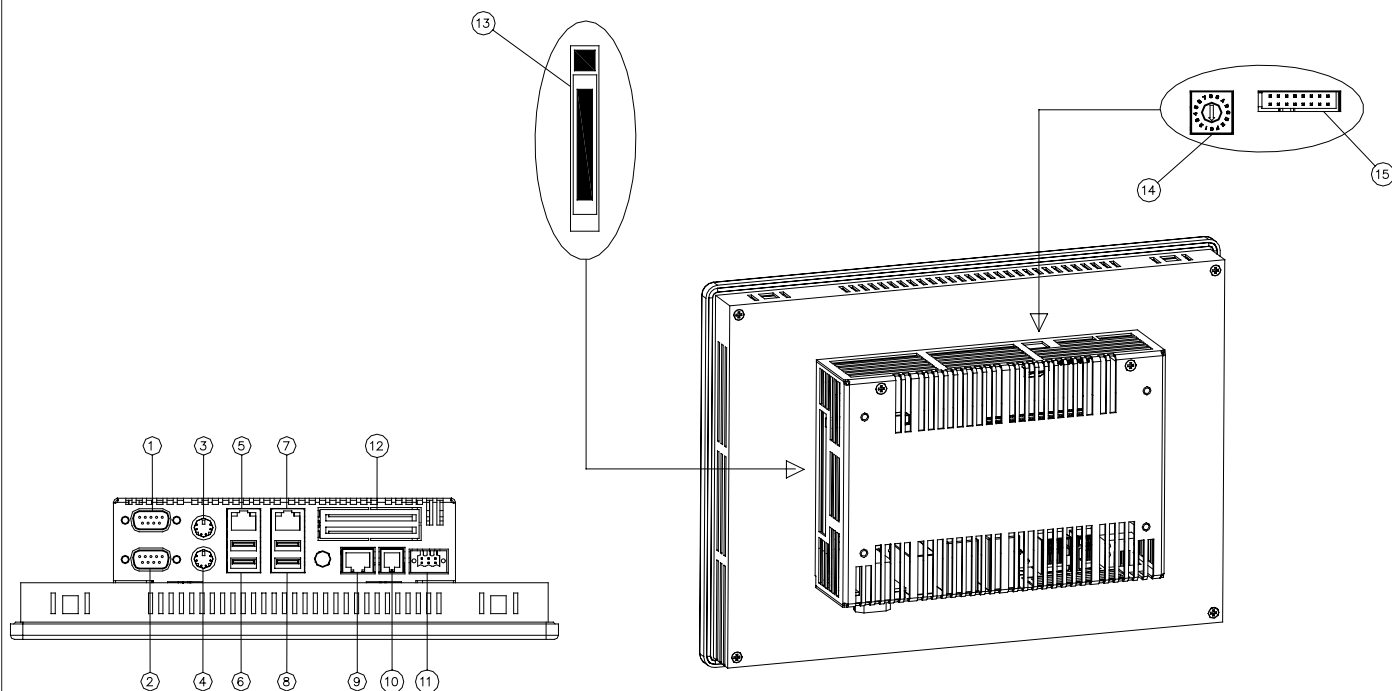


Table dimensions

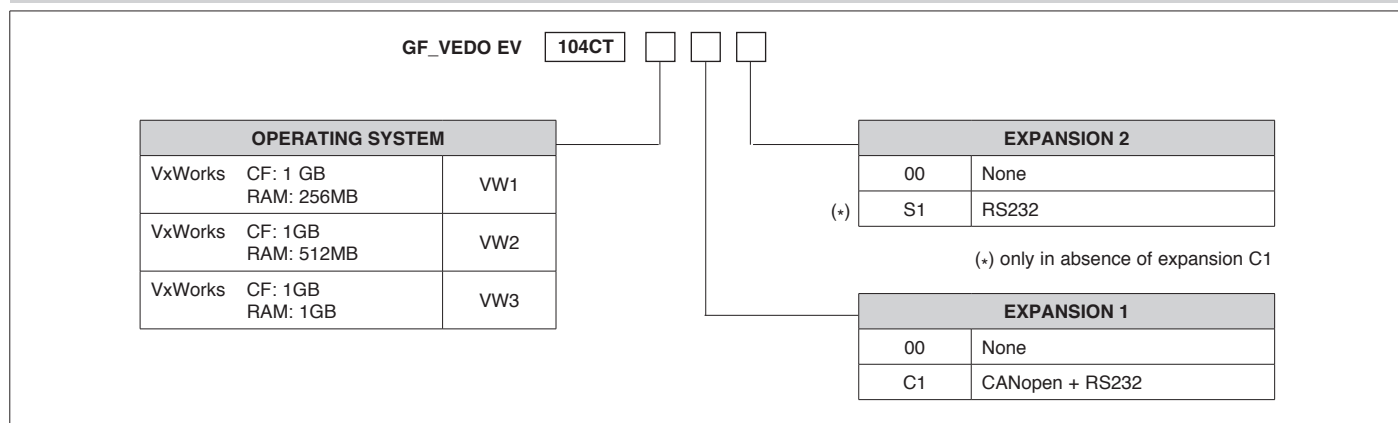
Model		frame								dima		
		A	B	C	D	E	F	G	H	I	L	
10.4" horizontal touch	104CT	266.0	192.5	68.5	61.0	256.0	182.5	166.0	114.5	258.0	184.0	mm
15" horizontal touch	150CT	371.0	274.9	76.0	68.0	356.0	260.0	166.0	114.5	359.0	262.0	mm
10.4" vertical touch	V 104CT	192.5	266.0	68.5	61.0	182.5	256.0	166.0	114.5	184.0	258.0	mm
15" vertical touch	V 150CT	274.9	371.0	76.0	68.0	260.0	356.0	166.0	114.5	262.0	359.0	mm

CONNECTIONS



Nr	Name	Description
1	FIELD BUS	[Optional] -CAN layer 2
2	RS232	Serial RS-232
3	MOUSE	PS/2 Mouse (green)
4	PC-KEY	PS/2 keyboard (violet)
5	ETH1	Ethernet 10/100 Base-T
6	USB	USB 2.0 Host (500 mA)
7	ETH2	Ethernet 10/100 Base-T
8	USB	USB 2.0 Host (500 mA)
9	KEY & LED	Fieldbuses keyboard
10	RS485	RS-485 optically-isolated serial
11	24 V d.c.	Power supply
12	AUX	Slot reserved for future uses
13	CF	Compact Flash
14	ROTARY	Rotary configuration selector
15	BATTERY	Battery jumper

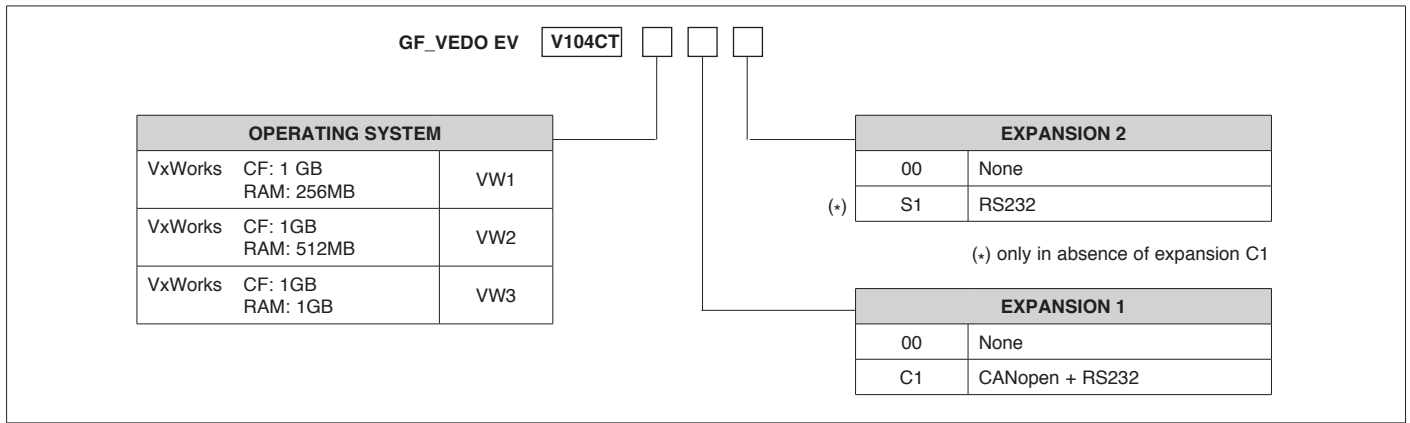
ORDERING CODE



GF_VEDO EV 104CT - horizontal model

Model						Description	Code
GF_VEDO EV 104CT	VW1	00	00	G		GF_VEDO EV 104CT Operator terminal for viasualization and control of advanced automation. 10,4" color display, touch screen, processor GEODE LX900, 600 MHz, operating system VxWorks (CF 1GB, RAM 256MB), 2 x Ethernet, 4 x USB, 1 x RS485 (RJ10), 1 x PS2 mouse, 1 x PS2 keyboard, 1 x Fieldbus keyboard.	F056622
GF_VEDO EV 104CT	VW1	C1	00	G		GF_VEDO EV 104CT Operator terminal for viasualization and control of advanced automation. 10,4" color display, touch screen, processor GEODE LX900, 600 MHz, operating system VxWorks (CF 1GB, RAM 256MB), 2 x Ethernet, 4 x USB, 1 x RS485 (RJ10), 1 x PS2 mouse, 1 x PS2 keyboard, 1 x Fieldbus keyboard, 1x CAN, 1x RS232.	F056996
GF_VEDO EV 104CT	VW1	00	S1	G		GF_VEDO EV 104CT Operator terminal for viasualization and control of advanced automation. 10,4" color display, touch screen, processor GEODE LX900, 600 MHz, operating system VxWorks (CF 1GB, RAM 256MB), 2 x Ethernet, 4 x USB, 1 x RS485 (RJ10), 1 x PS2 mouse, 1 x PS2 keyboard, 1 x Fieldbus keyboard, 1x RS232	F056809
GF_VEDO EV 104CT	VW2	00	00	G		GF_VEDO EV 104CT Operator terminal for viasualization and control of advanced automation. 10,4" color display, touch screen, processor GEODE LX900, 600 MHz, operating system VxWorks (CF 1GB, RAM 512MB), 2 x Ethernet, 4 x USB, 1 x RS485 (RJ10), 1 x PS2 mouse, 1 x PS2 keyboard, 1 x Fieldbus keyboard.	F056810
GF_VEDO EV 104CT	VW2	C1	00	G		GF_VEDO EV 104CT Operator terminal for viasualization and control of advanced automation. 10,4" color display, touch screen, processor GEODE LX900, 600 MHz, operating system VxWorks (CF 1GB, RAM 512MB), 2 x Ethernet, 4 x USB, 1 x RS485 (RJ10), 1 x PS2 mouse, 1 x PS2 keyboard, 1 x Fieldbus keyboard, 1x CAN, 1x RS232.	F056759
GF_VEDO EV 104CT	VW2	00	S1	G		GF_VEDO EV 104CT Operator terminal for viasualization and control of advanced automation. 10,4" color display, touch screen, processor GEODE LX900, 600 MHz, operating system VxWorks (CF 1GB, RAM 512MB), 2 x Ethernet, 4 x USB, 1 x RS485 (RJ10), 1 x PS2 mouse, 1 x PS2 keyboard, 1 x Fieldbus keyboard, 1x RS232	F056995
GF_VEDO EV 104CT	VW3	00	00	G		GF_VEDO EV 104CT Operator terminal for viasualization and control of advanced automation. 10,4" color display, touch screen, processor GEODE LX900, 600 MHz, operating system VxWorks (CF 1GB, RAM 1GB), 2 x Ethernet, 4 x USB, 1 x RS485 (RJ10), 1 x PS2 mouse, 1 x PS2 keyboard, 1 x Fieldbus keyboard	F056811
GF_VEDO EV 104CT	VW3	C1	00	G		GF_VEDO EV 104CT Operator terminal for viasualization and control of advanced automation. 10,4" color display, touch screen, processor GEODE LX900, 600 MHz, operating system VxWorks (CF 1GB, RAM 1GB), 2 x Ethernet, 4 x USB, 1 x RS485 (RJ10), 1 x PS2 mouse, 1 x PS2 keyboard, 1 x Fieldbus keyboard, 1x CAN, 1x RS232.	F056997
GF_VEDO EV 104CT	VW3	00	S1	G		GF_VEDO EV 104CT Operator terminal for viasualization and control of advanced automation. 10,4" color display, touch screen, processor GEODE LX900, 600 MHz, operating system VxWorks (CF 1GB, RAM 1GB), 2 x Ethernet, 4 x USB, 1 x RS485 (RJ10), 1 x PS2 mouse, 1 x PS2 keyboard, 1 x Fieldbus keyboard, 1x RS232	F056998

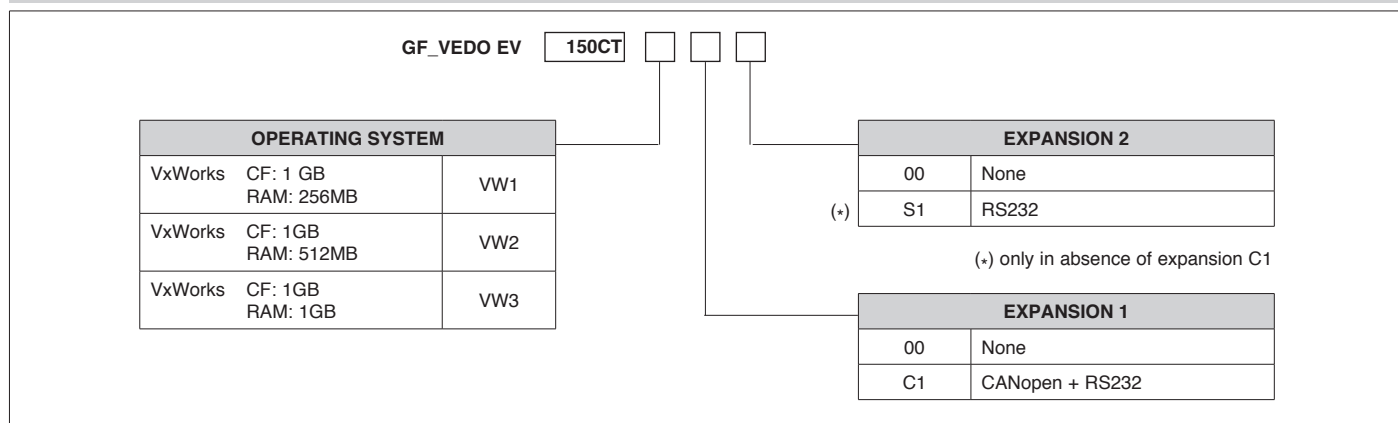
ORDERING CODE



GF_VEDO EV V104CT - Vertical model

Model	Description	Code
GF_VEDO EV V104CT VW1 00 00 G	GF_VEDO EV V104CT Operator terminal for visualization and control of advanced automation. 10,4" color display, touch screen, processor GEODE LX900, 600 MHz, operating system VxWorks (CF 1GB, RAM 256MB), 2 x Ethernet, 4 x USB, 1 x RS485 (RJ10), 1 x PS2 mouse, 1 x PS2 keyboard, 1 x Fieldbus keyboard, vertical installation.	F056718
GF_VEDO EV V104CT VW1 C1 00 G	GF_VEDO EV V104CT Operator terminal for visualization and control of advanced automation. 10,4" color display, touch screen, processor GEODE LX900, 600 MHz, operating system VxWorks (CF 1GB, RAM 256MB), 2 x Ethernet, 4 x USB, 1 x RS485 (RJ10), 1 x PS2 mouse, 1 x PS2 keyboard, 1 x Fieldbus keyboard, 1x CAN, 1x RS232, vertical installation.	F056999
GF_VEDO EV V104CT VW1 00 S1 G	GF_VEDO EV V104CT Operator terminal for visualization and control of advanced automation. 10,4" color display, touch screen, processor GEODE LX900, 600 MHz, operating system VxWorks (CF 1GB, RAM 256MB), 2 x Ethernet, 4 x USB, 1 x RS485 (RJ10), 1 x PS2 mouse, 1 x PS2 keyboard, 1 x Fieldbus keyboard, 1x RS232, vertical installation.	F057000
GF_VEDO EV V104CT VW2 00 00 G	GF_VEDO EV V104CT Operator terminal for visualization and control of advanced automation. 10,4" color display, touch screen, processor GEODE LX900, 600 MHz, operating system VxWorks (CF 1GB, RAM 512MB), 2 x Ethernet, 4 x USB, 1 x RS485 (RJ10), 1 x PS2 mouse, 1 x PS2 keyboard, 1 x Fieldbus keyboard, vertical installation.	F057001
GF_VEDO EV V104CT VW2 C1 00 G	GF_VEDO EV V104CT Operator terminal for visualization and control of advanced automation. 10,4" color display, touch screen, processor GEODE LX900, 600 MHz, operating system VxWorks (CF 1GB, RAM 512MB), 2 x Ethernet, 4 x USB, 1 x RS485 (RJ10), 1 x PS2 mouse, 1 x PS2 keyboard, 1 x Fieldbus keyboard, 1x CAN, 1x RS232, vertical installation.	F056760
GF_VEDO EV V104CT VW2 00 S1 G	GF_VEDO EV V104CT Operator terminal for visualization and control of advanced automation. 10,4" color display, touch screen, processor GEODE LX900, 600 MHz, operating system VxWorks (CF 1GB, RAM 512MB), 2 x Ethernet, 4 x USB, 1 x RS485 (RJ10), 1 x PS2 mouse, 1 x PS2 keyboard, 1 x Fieldbus keyboard, 1x RS232, vertical installation.	F057002
GF_VEDO EV V104CT VW3 00 00 G	GF_VEDO EV V104CT Operator terminal for visualization and control of advanced automation. 10,4" color display, touch screen, processor GEODE LX900, 600 MHz, operating system VxWorks (CF 1GB, RAM 1GB), 2 x Ethernet, 4 x USB, 1 x RS485 (RJ10), 1 x PS2 mouse, 1 x PS2 keyboard, 1 x Fieldbus keyboard, vertical installation.	F057003
GF_VEDO EV V104CT VW3 C1 00 G	GF_VEDO EV V104CT Operator terminal for visualization and control of advanced automation. 10,4" color display, touch screen, processor GEODE LX900, 600 MHz, operating system VxWorks (CF 1GB, RAM 1GB), 2 x Ethernet, 4 x USB, 1 x RS485 (RJ10), 1 x PS2 mouse, 1 x PS2 keyboard, 1 x Fieldbus keyboard, 1x CAN, 1x RS232, vertical installation.	F057004
GF_VEDO EV V104CT VW3 00 S1 G	GF_VEDO EV V104CT Operator terminal for visualization and control of advanced automation. 10,4" color display, touch screen, processor GEODE LX900, 600 MHz, operating system VxWorks (CF 1GB, RAM 1GB), 2 x Ethernet, 4 x USB, 1 x RS485 (RJ10), 1 x PS2 mouse, 1 x PS2 keyboard, 1 x Fieldbus keyboard, 1x RS232, vertical installation.	F057055

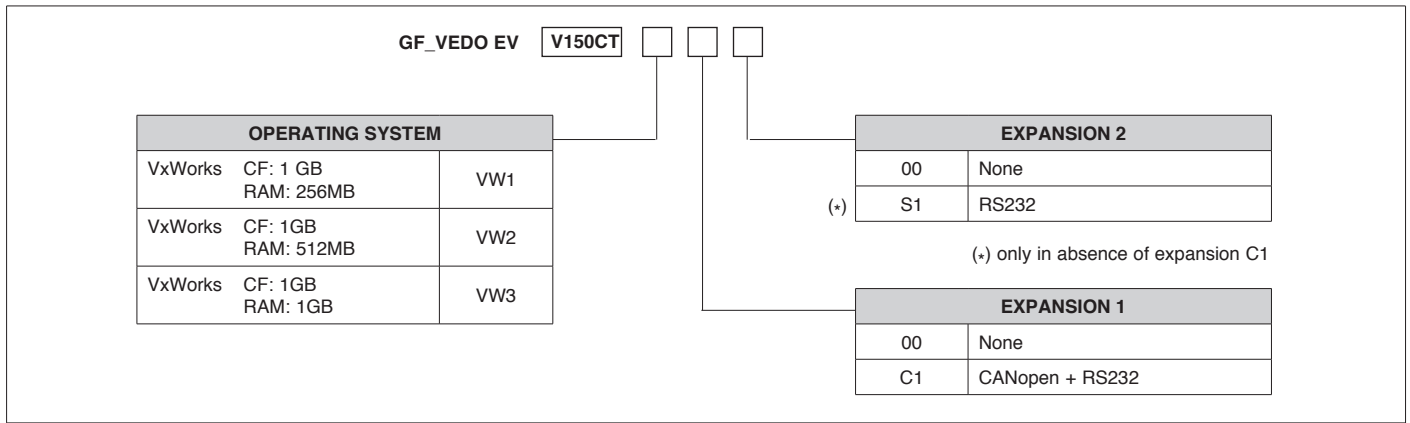
ORDERING CODE



GF_VEDO EV 150CT - horizontal model

Model					Description	Code
GF_VEDO EV 150CT	VW1	00	00	G	GF_VEDO EV 150CT Operator terminal for viasualization and control of advanced automation. 15" color display, touch screen, processor GEODE LX900, 600 MHz, operating system VxWorks (CF 1GB, RAM 256MB), 2 x Ethernet, 4 x USB, 1 x RS485 (RJ10), 1 x PS2 mouse, 1 x PS2 keyboard, 1 x Fieldbus keyboard..	F056721
GF_VEDO EV 150CT	VW1	C1	00	G	GF_VEDO EV 150CT Operator terminal for viasualization and control of advanced automation. 15" color display, touch screen, processor GEODE LX900, 600 MHz, operating system VxWorks (CF 1GB, RAM 256MB), 2 x Ethernet, 4 x USB, 1 x RS485 (RJ10), 1 x PS2 mouse, 1 x PS2 keyboard, 1 x Fieldbus keyboard, 1x CAN, 1x RS232.	F057056
GF_VEDO EV 150CT	VW1	00	S1	G	GF_VEDO EV 150CT Operator terminal for viasualization and control of advanced automation. 15" color display, touch screen, processor GEODE LX900, 600 MHz, operating system VxWorks(CF 1GB, RAM 256MB), 2 x Ethernet, 4 x USB, 1 x RS485 (RJ10), 1 x PS2 mouse, 1 x PS2 keyboard, 1 x Fieldbus keyboard, 1x RS232.	F057057
GF_VEDO EV 150CT	VW2	00	00	G	GF_VEDO EV 150CT Operator terminal for viasualization and control of advanced automation. 15" color display, touch screen, processor GEODE LX900, 600 MHz, operating system VxWorks (CF 1GB, RAM 512MB), 2 x Ethernet, 4 x USB, 1 x RS485 (RJ10), 1 x PS2 mouse, 1 x PS2 keyboard, 1 x Fieldbus keyboard.	F057058
GF_VEDO EV 150CT	VW2	C1	00	G	GF_VEDO EV 150CT Operator terminal for viasualization and control of advanced automation. 15" color display, touch screen, processor GEODE LX900, 600 MHz, operating system VxWorks (CF 1GB, RAM 512MB), 2 x Ethernet, 4 x USB, 1 x RS485 (RJ10), 1 x PS2 mouse, 1 x PS2 keyboard, 1 x Fieldbus keyboard, 1x CAN, 1x RS232.	F056761
GF_VEDO EV 150CT	VW2	00	S1	G	GF_VEDO EV 150CT Operator terminal for viasualization and control of advanced automation. 15" color display, touch screen, processor GEODE LX900, 600 MHz, operating system VxWorks (CF 1GB, RAM 512MB), 2 x Ethernet, 4 x USB, 1 x RS485 (RJ10), 1 x PS2 mouse, 1 x PS2 keyboard, 1 x Fieldbus keyboard, 1x RS232.	F057059
GF_VEDO EV 150CT	VW3	00	00	G	GF_VEDO EV 150CT Operator terminal for viasualization and control of advanced automation. 15" color display, touch screen, processor GEODE LX900, 600 MHz, operating system VxWorks (CF 1GB, RAM 1GB), 2 x Ethernet, 4 x USB, 1 x RS485 (RJ10), 1 x PS2 mouse, 1 x PS2 keyboard, 1 x Fieldbus keyboard.	F057060
GF_VEDO EV 150CT	VW3	C1	00	G	GF_VEDO EV 150CT Operator terminal for viasualization and control of advanced automation. 15" color display, touch screen, processor GEODE LX900, 600 MHz, operating system VxWorks (CF 1GB, RAM 512MB), 2 x Ethernet, 4 x USB, 1 x RS485 (RJ10), 1 x PS2 mouse, 1 x PS2 keyboard, 1 x Fieldbus keyboard, 1x CAN, 1x RS232.	F057061
GF_VEDO EV 150CT	VW3	00	S1	G	GF_VEDO EV 150CT Operator terminal for viasualization and control of advanced automation. 15" color display, touch screen, processor GEODE LX900, 600 MHz, operating system VxWorks (CF 1GB, RAM 1GB), 2 x Ethernet, 4 x USB, 1 x RS485 (RJ10), 1 x PS2 mouse, 1 x PS2 keyboard, 1 x Fieldbus keyboard, 1x RS232.	F057062

ORDERING CODE



GF_VEDO EV V150CT - vertical model

Model	Description					Code
GF_VEDO EV V150CT VW1 00 00 G	GF_VEDO EV V150CT Operator terminal for visualization and control of advanced automation. 15" color display, touch screen, processor GEODE LX900, 600 MHz, operating system VxWorks (CF 1GB, RAM 256MB), 2 x Ethernet, 4 x USB, 1 x RS485 (RJ10), 1 x PS2 mouse, 1 x PS2 keyboard, 1 x Fieldbus keyboard, vertical installation.					F056722
GF_VEDO EV V150CT VW1 C1 00 G	GF_VEDO EV V150CT Operator terminal for visualization and control of advanced automation. 15" color display, touch screen, processor GEODE LX900, 600 MHz, operating system VxWorks (CF 1GB, RAM 256MB), 2 x Ethernet, 4 x USB, 1 x RS485 (RJ10), 1 x PS2 mouse, 1 x PS2 keyboard, 1 x Fieldbus keyboard, 1x CAN, 1x RS232, vertical installation.					F057108
GF_VEDO EV V150CT VW1 00 S1 G	GF_VEDO EV V150CT Operator terminal for visualization and control of advanced automation. 15" color display, touch screen, processor GEODE LX900, 600 MHz, operating system VxWorks (CF 1GB, RAM 256MB), 2 x Ethernet, 4 x USB, 1 x RS485 (RJ10), 1 x PS2 mouse, 1 x PS2 keyboard, 1 x Fieldbus keyboard, 1x CAN, 1x RS232, vertical installation.					F057109
GF_VEDO EV V150CT VW2 00 00 G	GF_VEDO EV V150CT Operator terminal for visualization and control of advanced automation. 15" color display, touch screen, processor GEODE LX900, 600 MHz, operating system VxWorks (CF 1GB, RAM 512MB), 2 x Ethernet, 4 x USB, 1 x RS485 (RJ10), 1 x PS2 mouse, 1 x PS2 keyboard, 1 x Fieldbus keyboard, vertical installation.					F057110
GF_VEDO EV V150CT VW2 C1 00 G	GF_VEDO EV V150CT Operator terminal for visualization and control of advanced automation. 15" color display, touch screen, processor GEODE LX900, 600 MHz, operating system VxWorks (CF 1GB, RAM 512MB), 2 x Ethernet, 4 x USB, 1 x RS485 (RJ10), 1 x PS2 mouse, 1 x PS2 keyboard, 1 x Fieldbus keyboard, 1x CAN, 1x RS232, vertical installation.					F056762
GF_VEDO EV V150CT VW2 00 S1 G	GF_VEDO EV V150CT Operator terminal for visualization and control of advanced automation. 15" color display, touch screen, processor GEODE LX900, 600 MHz, operating system VxWorks (CF 1GB, RAM 512MB), 2 x Ethernet, 4 x USB, 1 x RS485 (RJ10), 1 x PS2 mouse, 1 x PS2 keyboard, 1 x Fieldbus keyboard, 1x RS232, vertical installation.					F057111
GF_VEDO EV V150CT VW3 00 00 G	GF_VEDO EV V150CT Operator terminal for visualization and control of advanced automation. 15" color display, touch screen, processor GEODE LX900, 600 MHz, operating system VxWorks (CF 1GB, RAM 1GB), 2 x Ethernet, 4 x USB, 1 x RS485 (RJ10), 1 x PS2 mouse, 1 x PS2 keyboard, 1 x Fieldbus keyboard, vertical installation.					F057112
GF_VEDO EV V150CT VW3 C1 00 G	GF_VEDO EV V150CT Operator terminal for visualization and control of advanced automation. 15" color display, touch screen, processor GEODE LX900, 600 MHz, operating system VxWorks (CF 1GB, RAM 1GB), 2 x Ethernet, 4 x USB, 1 x RS485 (RJ10), 1 x PS2 mouse, 1 x PS2 keyboard, 1 x Fieldbus keyboard, 1x CAN, 1x RS232, vertical installation.					F057113
GF_VEDO EV V150CT VW3 00 S1 G	GF_VEDO EV V150CT Operator terminal for visualization and control of advanced automation. 15" color display, touch screen, processor GEODE LX900, 600 MHz, operating system VxWorks (CF 1GB, RAM 1GB), 2 x Ethernet, 4 x USB, 1 x RS485 (RJ10), 1 x PS2 mouse, 1 x PS2 keyboard, 1 x Fieldbus keyboard, 1x RS232, vertical installation.					F057114

ACCESSORIES

Keyboards	Fieldbuses keyboard to manage movements	TF
Supply	Stabilized supply 100....240Vac/24Vdc, 5A	GF_PS5
Software	Integrated programming environment	GF_Project VX

GEFRAN spa reserves the right to make any kind of design or functional modification at any moment without prior notice

UL	Conformity C/UL/US File no. E198546
CE	In conformity to ECC 2004/108/CE (EMC) and 2006/95/CE (LVD) with reference to: EN 61131-2 (product) EN 61010-1 (safety).

GEFRAN

GEFRAN spa
via Sebina, 74
25050 Provaglio d'Iseo (BS)
Tel. +39 030 9888.1 - fax +39 030 9839063
Internet: <http://www.gefran.com>

DTS_GF_VEDO-EV_04-2015_ENG