



**Main features**

- Fast and easy strain measurement on cylinders (magnetic or not)
- Clamp the strain ring around the tie bar and measure
- 0,5% accuracy
- Without calibration
- Ideal for cyclical applications, e.g. clamping force measurements on presses

The strain ring type AN1068 is based on the proven press-on technology of strain gages.

Specially developed strain gages are pressed onto the surface to be measured that friction replaces bonding the measurements can be taken instantly, without calibration necessary.

The mounting is easy: mount the sensor with the torque of 3 Nm onto the cylinder, connect the cable and measure.

The surface at the measuring location does not need to be chemically clean, just clean it with some solving agent.

All parts of the sensor are made in stainless materials.

The surface at the measuring location should be free of any loose material (e.g. rust, paint etc).

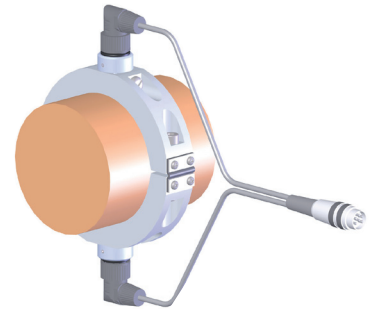
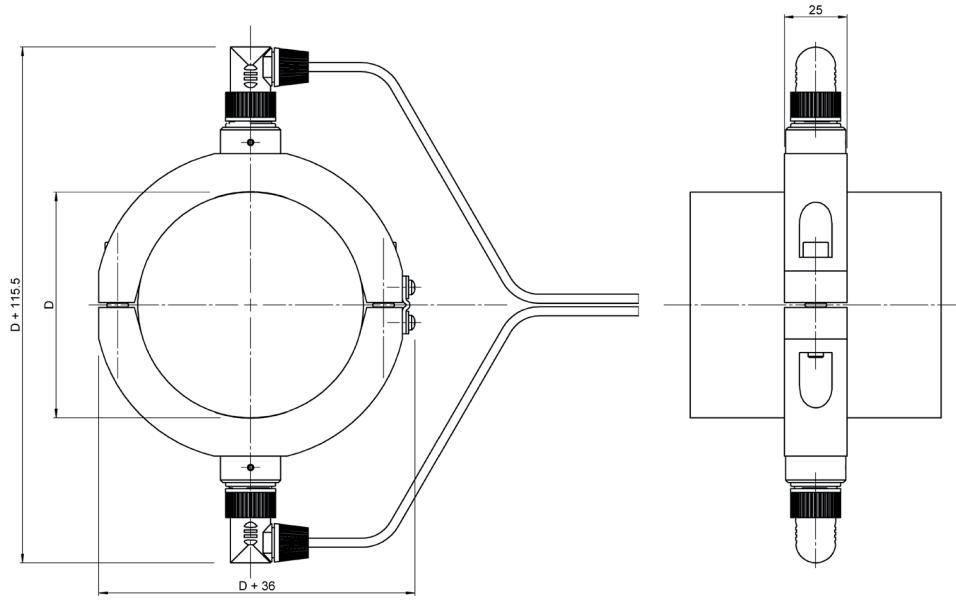
The zero-offset of the pressed on strain gages after mounting is usually high our amplifiers are able to handle this reset by the simple push of a button or a reset signal.

**TECHNICAL DATA**

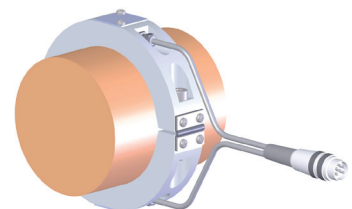
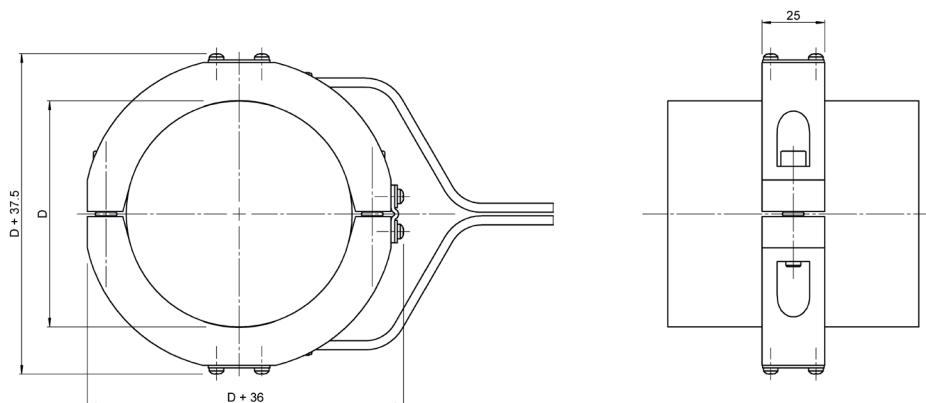
Strain gauge type	Foil (GF = 2.0)
Bridge resistance	350Ω
Measuring range	±1000µε
Sensitivity tolerance	± 0.2%
Transverse sensitivity	0.9 ± 0.2%
Accuracy	< ± 0.5% FS
Linearity	< ± 0.5% FS
Hysteresis	< ± 0.2% FS)
Repeatability	< ± 0.1% FS
Nominal input resistance	350Ω
Supply voltage	5VDC (max 8VDC)
Supply current	< 15mA
Operating temperatur range	0...55°C
Storage temperatur range	0...55°C
Overload capability	indefinite (offset occurs)
Protection class	IP66
Case material	Anodised aluminium
Cover material	Steel

# MECHANICAL DIMENSIONS

## Connection D :

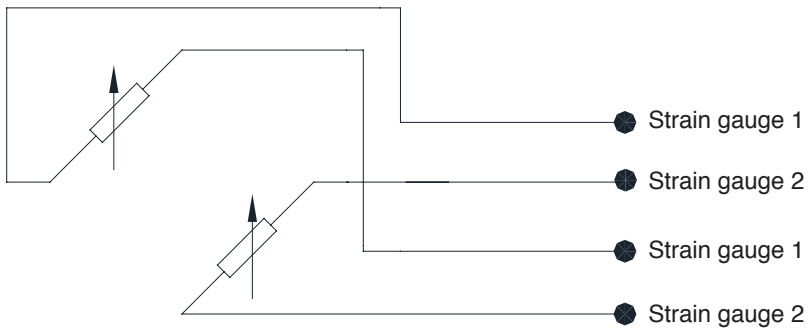


## Connection C :

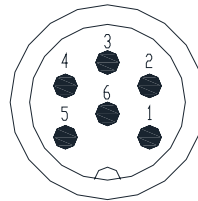


# ELECTRICAL CONNECTIONS

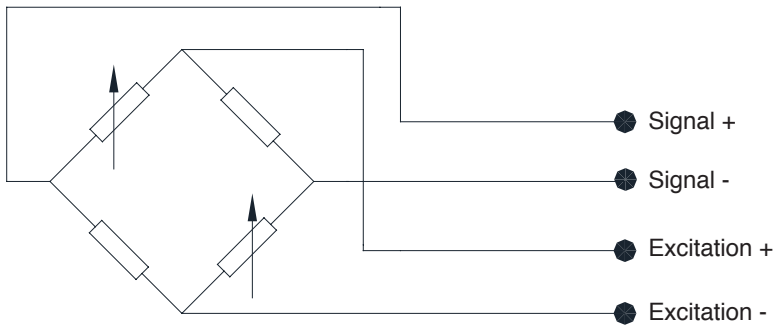
## Version 2/4 bridge



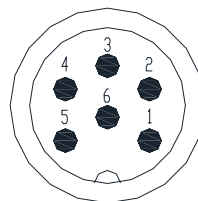
CONNECTOR OUTPUT :	
	1
	4
	2
	5



## Version full bridge (only available with Option C, Cable and Connector)



CONNECTOR OUTPUT :	
	4
	5
	1-2
	3-6



## OPTIONAL ACCESSORIES

Accessories		
Y - cable ( for 2x1/4 bridge)	3 meter	<b>C-682-030-680-Y</b>
	5 meter	<b>C-682-050-680-Y</b>
	10 meter	<b>C-682-100-680-Y</b>

## ORDER CODE

Strain ring  
**AN1068** -    -  -  -

Bar diameter		Cable length *	
30 mm	<b>030</b>	<b>005</b>	0.5m
80 mm	<b>080</b>	<b>030</b>	3m
85 mm	<b>085</b>	<b>050</b>	5m
130 mm	<b>130</b>	<b>100</b>	10m
135 mm	<b>135</b>	<b>XXX</b>	Define your own length (0,5m..15m)
260 mm	<b>260</b>		
267 mm	<b>267</b>		
360 mm	<b>360</b>		
500 mm	<b>500</b>		
Define your diameter (from 30mm to 500mm)	<b>XXX</b>		

Bridge	
2/4 bridge	<b>2</b>
Full bridge (only available with Option C, Cable and Connector)	<b>4</b>

Connection	
Connector	<b>D</b>
Cable and connector	<b>C</b>

\* Only for cable version (Connection C)

Example: **AN1068--080-02-C-030**

GEFRAN spa reserves the right to make any kind of design or functional modification at any moment without prior notice.



**Sensormate AG**  
Steigweg 8, - CH-8355 Aadorf, Switzerland  
ph: +41(0)52-2421818 - fax: +41(0)52-3661884  
Internet: <http://www.sensormate.ch>

**GEFRAN**

**GEFRAN spa**  
via Sebina, 74 - 25050 PROVAGLIO D'ISEO (BS) - ITALY  
ph. +39 030 9888.1 - fax. +39 030 9839063  
Internet: <http://www.gefran.com>

DTS\_AN1068\_02-2014\_ENG